

Separate door

NASSAU Thermo Door

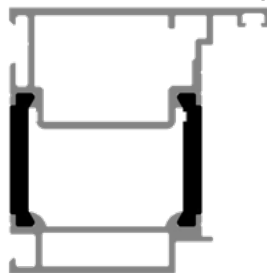
NASSAU Thermo Doors offer strong insulation values and an aesthetic design. The new door profile system is, as a standard, delivered with broken thermal bridges.

Combined with the well-known polyurethane-foamed 90F-section fillings, excellent insulation values are achieved with U-values as low as 1,0 W/m²K. See the thermographical illustration below.

The doors are produced with individual measurements according to the wishes of the specific customer. The doors are supplied either as single- or double doors, with or without the matching over field.

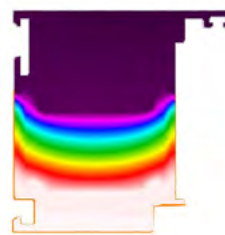


NASSAU Thermo Door frame profile



Broken thermal bridge

Outside temperature 0°



Inside temperature 20°

In order to create a beautiful and harmonic facade with a link between your sectional door and a separate door, the separate door can be supplied either with the appropriate 90F-section fillings or with glass-fillings according to the figure below.

The separate door is adjusted to the sectional door to create the best possible alignment between the two. The section fillings of the door can be supplied in the same colors as the sectional door, just as the actual door profiles can be delivered in either anodized or powdercoated versions.

NASSAU Thermo Door System

	Max width	Max. height	90F-section ¹	Filling 4-18-4HG ²	Filling 6-14-6LAM ³	Filling SI ⁴	Filling AI ⁵	Filling APS10 ⁶
Single door	1264 mm	2561 mm	✓	✓	✓	✓	✓	✓
Double door	2464 mm	2561 mm	✓	✓	✓	✓	✓	✓
1	90F-section fillings are as standard supplied in alu natural. Pre-paint in standard colour or wet-paint in RAL is optional				Standard: <ul style="list-style-type: none"> ● Profile system with broken thermal bridges ● Alu natural anodised profile system ● Standard latch lock with double profile cylinder ● Anodized door handles outside and inside 			
2	Double 4 mm tempered glass							
3	Double 6 mm laminated glass							
4	Double 1,5 mm alu stucco w. insulation							
5	Double 1,5 mm smooth anodised alu w. insulation							
6	3 mm powder coated aluminium with 10 mm square holes							

**U-VALUE
FROM ONLY
1,0 W/m²K**

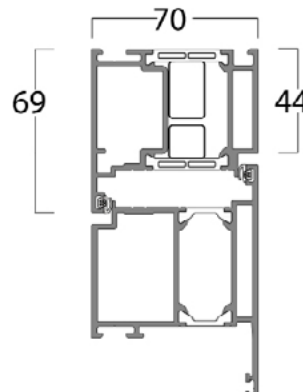
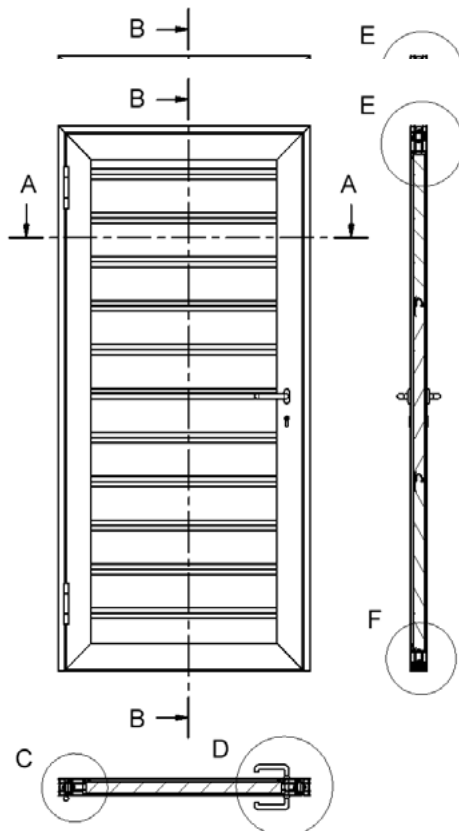


Separate door

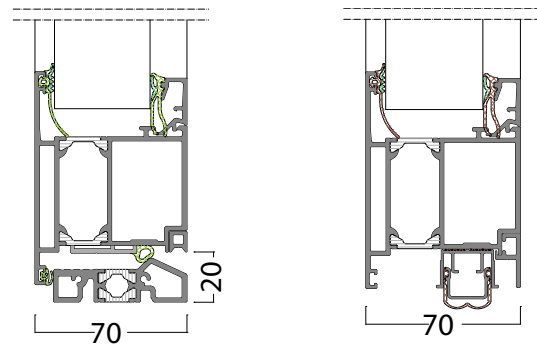
NASSAU Thermo Door

Depending on customer wishes, NASSAU Thermo Doors can be offered with various equipment like for example door closer, flange cover, and special door locks, like anti-panic locks, snap locks, multiple locks, and electric strike.

Please note that special door facade solutions (besides standard single/double doors with/without matching over field) demand a clarification conc. technical solution and price in advance.



F1 - Standard solution doorstep F2 - Special lowering gasket



At a door width of 1000 mm (production measurement incl. frame profiles) the free passage width is 800 mm with a 90° door opening. (excl. door handle)

